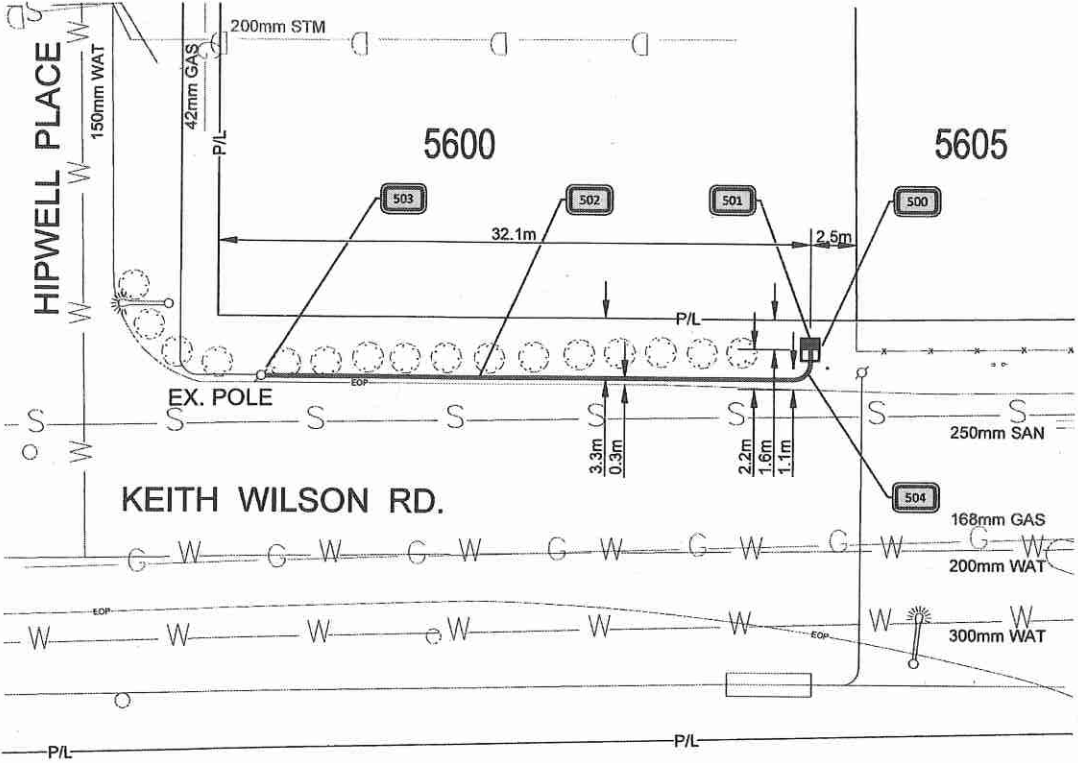


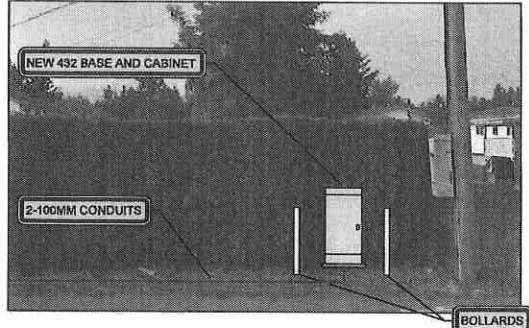
RECEIVED AND PROCESSED
BY LAND DEVELOPMENT
INITIALS
[Signature]
APR 05 2017



PLAN VIEW
HORIZONTAL SCALE: 1 : 250

NOTES:

500	INSTALL 432F FDH ON CONCRETE PAD WITH 2x BOLLARDS. SEE DETAIL 'C' SHEET 500
501	STUB 2-100mm DUCTS 0.5m ABOVE FINISHED GRADE
502	INSTALL (2) 100mm DBII PVC CONDUIT L= 33.0 m. SEE DETAIL 'B' SHEET 500
503	INSTALL NEW TELUS PILASTER AND CONNECT 2-100mm PVC DBII DUCTS. SEE DETAIL 'A' SHT. 500
504	NEW 90° BEND 2-100mm DBII PVC CONDUIT



5600 KEITH WILSON RD
FDH - SITE PLAN
N.T.S.

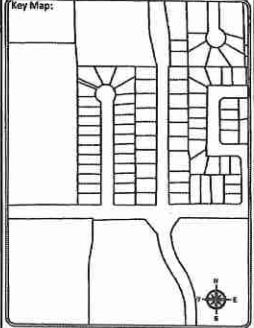
CAUTION:
GAS FACILITIES IN AREA
LOCATE AND EXPOSE
PRIOR TO COMMENCING WORK

METHOD OF PLACEMENT
VIA OPEN TRENCH UNLESS
OTHERWISE NOTED

LOCATE AND PROTECT ALL
OTHER UTILITIES IN FIELD

ALL MEASUREMENTS ARE IN
METERS UNLESS NOTED

Sheet Title:
Design
Function:
Make ready Task:
FDH Placement



DO ONE CALL
CALL BEFORE YOU DIG
1-800-485-5889
OR BY CALLING 800
UTILITY AREA 888-8888
CALL AT LEAST TWO FULL BUSINESS DAYS
BEFORE YOU PLAN TO DIG

Client:
TELUS

Prepared by:
FAFL
SUITE 200 - 7485 130 ST
Surrey BC V3W 1H8

Rev	Date	Notes	QC
-	-	-	-
-	-	-	-
-	-	-	-
-	-	-	-
-	-	-	-
- I/P: March 16 2017 -			
DRAWN BY: IFC: 30118 2017			
DESIGNED BY: KADTEC SYSTEMS			

Proprietary Information
Not for disclosure except under written agreement



Project:
Falcon 2017
SRDS 3101A - 2628025
Sardis, BC

File Name:
COID Route
SRDS 3101A
Network Number
2628025 Sheet Number
600

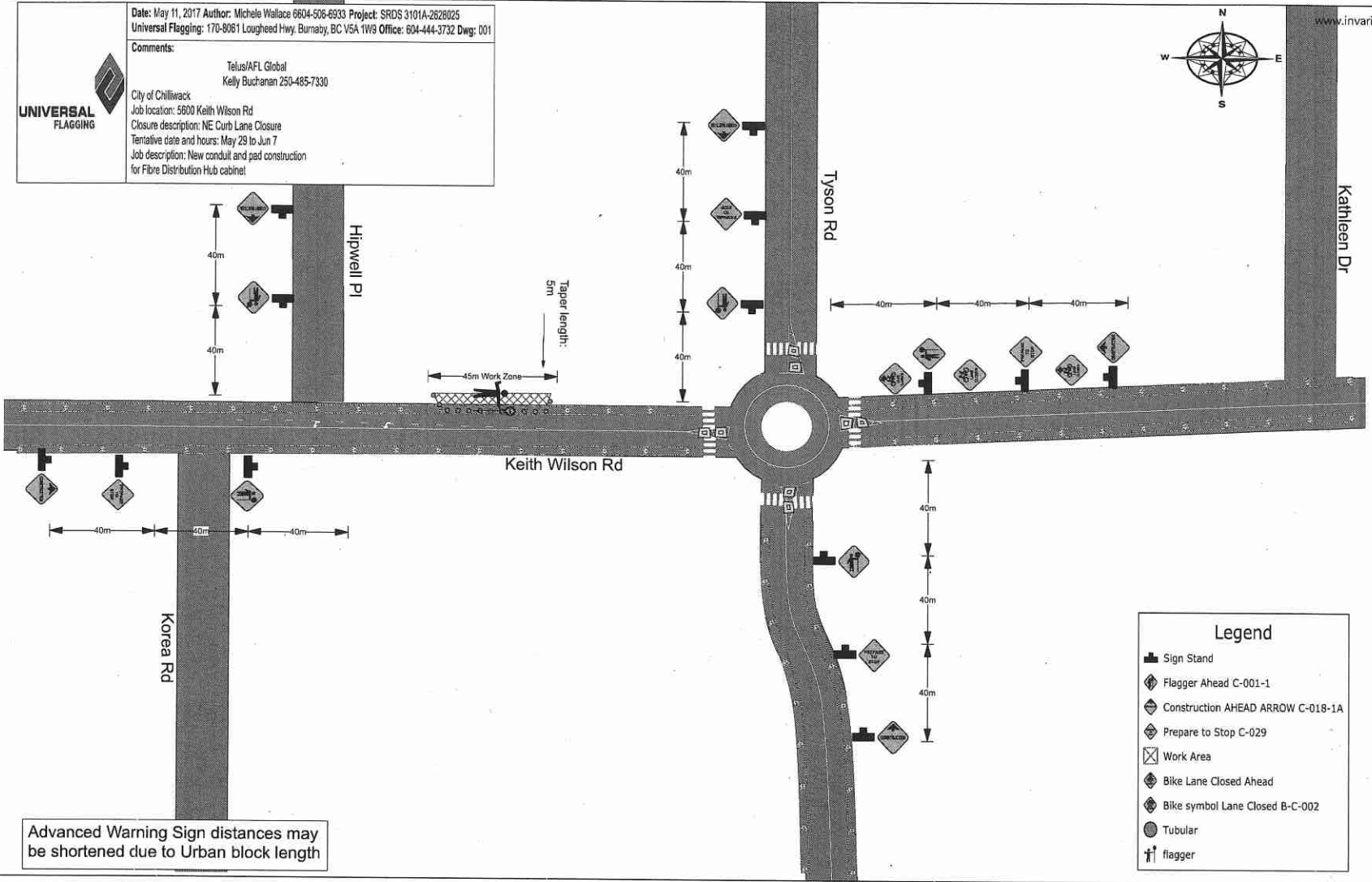
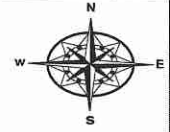


Date: May 11, 2017 Author: Michele Wallace 604-506-6933 Project: SRDS 3101A-2628025
Universal Flagging: 170-8061 Lougheed Hwy, Burnaby, BC V5A 1W9 Office: 604-444-3732 Dwg: 001

Comments:

Telus/AFL Global
Kelly Buchanan 250-485-7330
City of Chilliwack
Job location: 5600 Keith Wilson Rd
Closure description: NE Curb Lane Closure
Tentative date and hours: May 29 to Jun 7
Job description: New conduit and pad construction
for Fibre Distribution Hub cabinet

www.invarion.com



Advanced Warning Sign distances may be shortened due to Urban block length

Legend

- Sign Stand
- Flagger Ahead C-001-1
- Construction AHEAD ARROW C-018-1A
- Prepare to Stop C-029
- Work Area
- Bike Lane Closed Ahead
- Bike symbol Lane Closed B-C-002
- Tubular
- flagger